

How to Use PGP Key on Integration Center For Outbound files

i. Prerequisite(s) :

Software for generating a Key Pair (Private and Public Key) to be used for encryption and decryption

Software for Decrypting files where the generated private key will be used.

SFTP Credentials

ii. Procedure

1. Generating a Key Pair

The customer would be the one to choose platform to be used for generating their own key pair and decrypting their messages.

(Disclaimer : For the sake of simulation, I have used a third party free software for demonstrating how to create a Key Pair, this is by no means a form of endorsement and/or advertising but purely informative)

Using third party software, Generate a Key Pair, supply all information which will satisfy the security configuration of your generated key pair

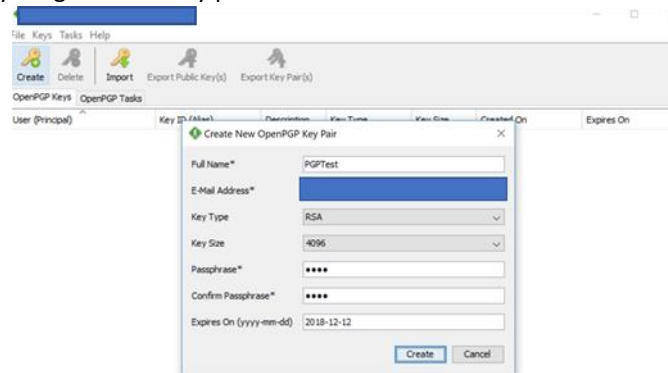


Figure 1.0 In the example figure, a standard set of parameters were used.

2. Only select the Export the Public Key option, this is the file which will encrypt the output file from Integration Center later.

(Note : On your PGP Key software of choice, ensure to take note of the Key Alias (this file contains the private key which will in turn decrypt the file which the public key has encrypted)

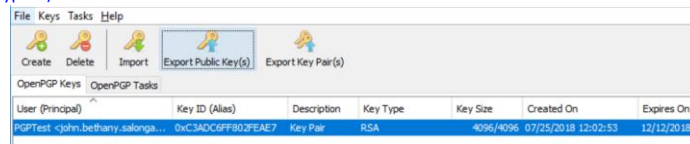


Figure 2.0 Exporting the Public Key

3. Import the public key in Integration Center

Go To Integration Center -> Security Center -> PGP File Encryption Keys -> Import a Key

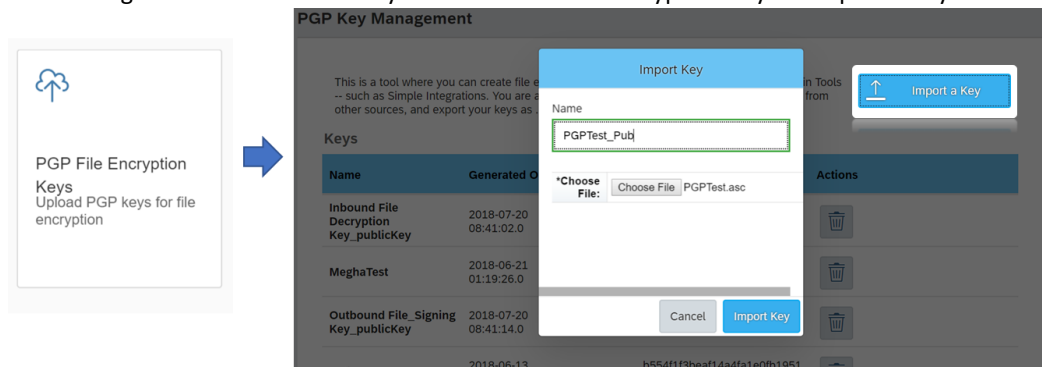


Figure 3.0 Import the Public Key

- In Integration Center, Under destination Settings Tab on Advanced Settings section, select from the option of File Encryption list the Public Key you have imported.

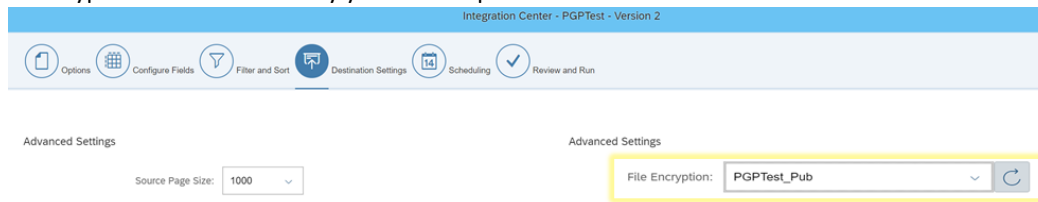


Figure 4.0 Select the Imported Public Key

- The supposed output file is now encrypted.

Note : data provided here is dummy.

Code	Start Date	Cost Center Manager	createdBy
1234567	2016-01-01T00:00:00Z		admin3
31400	2016-01-10T00:00:00Z		admin3
35102	2017-08-07T00:00:00Z	aaaa	admin3
30001	1990-01-01T00:00:00Z		admin
31100	1990-01-01T00:00:00Z		admin

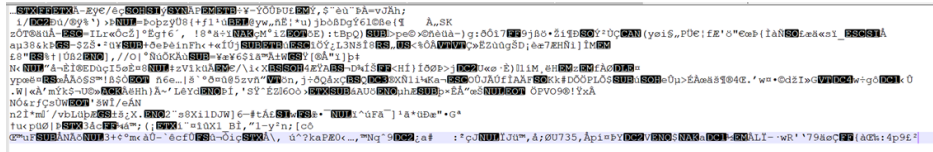


Figure 5.0 Sample Preview data Encrypted output

Additional :

To decrypt use the PGP Software of choice to apply the Private key from 1.0 and process the document

-Sample Output contains the data from the preview on the IC Job-

```
pgp.txt - Notepad
File Edit Format View Help
32000,1990-01-01T00:00:00Z,,admin
32100,1990-01-01T00:00:00Z,,admin
33000,1990-01-01T00:00:00Z,,admin
33100,1990-01-01T00:00:00Z,,admin
33110,1990-01-01T00:00:00Z,,admin
33120,1990-01-01T00:00:00Z,,admin
33200,1990-01-01T00:00:00Z,,admin
33210,1990-01-01T00:00:00Z,,admin
33211,1990-01-01T00:00:00Z,,admin
33220,1990-01-01T00:00:00Z,,admin
33221,1990-01-01T00:00:00Z,,admin
35102,2017-08-07T00:00:00Z,aaaa,admin3
34000,1990-01-01T00:00:00Z,,admin
40000,1990-01-01T00:00:00Z,,admin
40001,1990-01-01T00:00:00Z,,admin
41100,1990-01-01T00:00:00Z,,admin
41200,1990-01-01T00:00:00Z,,admin
41300,1990-01-01T00:00:00Z,,admin
```